

## American Beech



With its extremely smooth, light gray bark and leaves with serrated edges, the American beech is a very easy tree to identify. Beech nuts are eaten by a large variety of birds and mammals, including ducks, blue jays, deer, black bears and foxes. Beech wood is used commercially for flooring, furniture, plywood, railroad ties, paper pulp and heating.

## Tulip Poplar



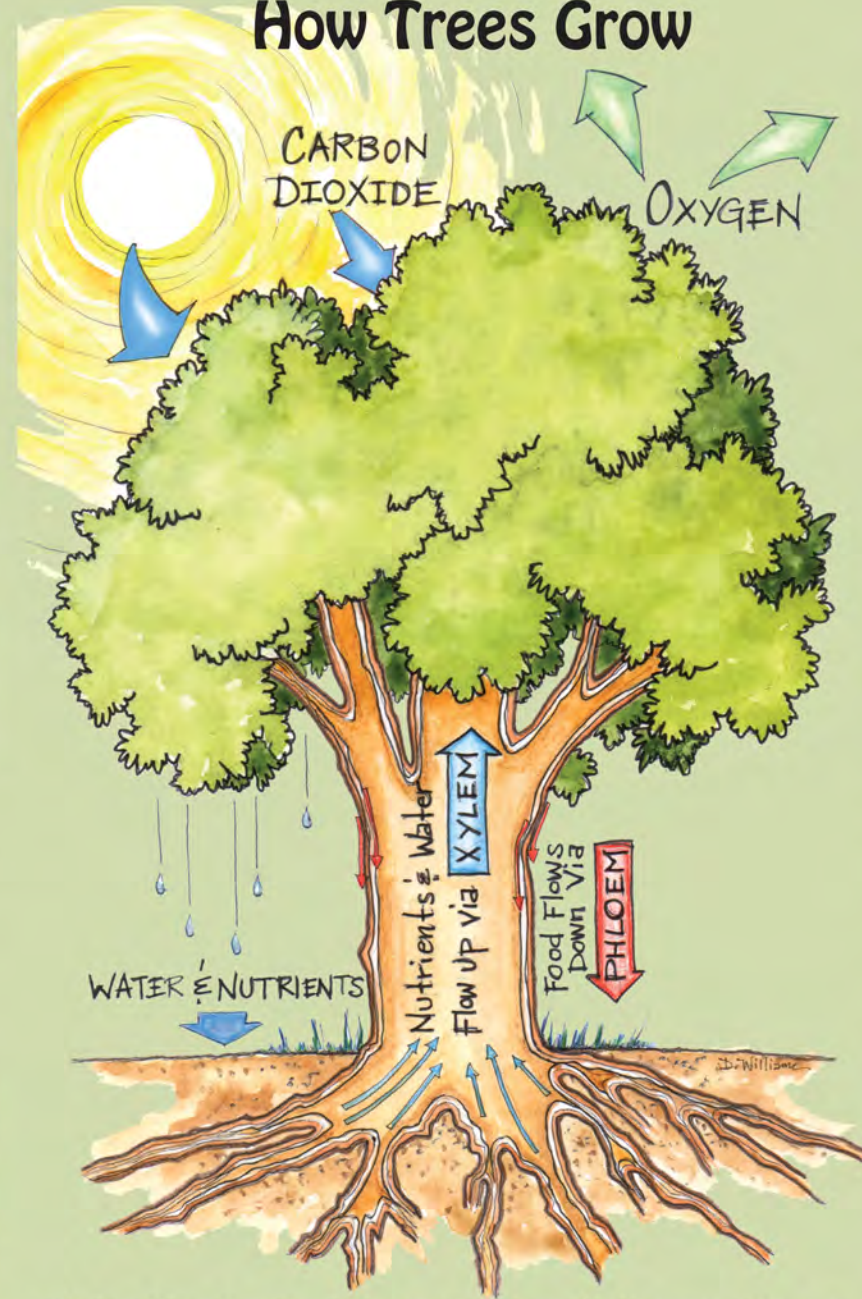
Growing straight and tall with a light gray bark and a large broad leaf that looks like the tip has been bitten off, the tulip poplar is easy to find. Due to its large size and straight growth, this tree provides a lot of useful lumber. Tulip poplar is also a very important tree for honey production. In spring, honeybees collect nectar from the poplar's large and plentiful yellow-orange flowers.

## American Holly



As you walk down the trail, look for the sharp, spiny, evergreen leaves of the American holly. It is also known as the Christmas holly because the red fruits appear in winter and are used for Christmas decorations. If eaten, their berries can make people very sick but are a valuable winter food source for deer and a variety of bird species.

## The Need to Know How Trees Grow



Plants and trees have the ability to make their own food in a process known as **photosynthesis**. They do this by sucking water and nutrients from the soil up through their xylem and into their leaves. The water and nutrients are combined with carbon dioxide and sunlight to make a sugary food called **glucose**. This food then travels down through the phloem to the rest of the tree, so it can grow.

Illustrations by David Williams, Wingin' it Works

## Flowering Dogwood



The flowering dogwood is a small tree that is abundant throughout the eastern United States. The bark of a dogwood has small cubic plates. The white "petals" of the dogwood flower are actually sepals (modified leaves), while the true flowers are the small yellow clusters in the middle. The buds look like gray-green chocolate chips. Dogwood trees were historically used to create quinine - a fever reducer.

## Red Maple



Able to grow in almost any soil condition, the red maple is one of the most abundant and widespread trees in eastern North America. With red twigs, buds, flowers, and seeds, it's easy to see how the red maple got its name. Red maple wood is used to make parts of guitars, banjos, drums, and other musical instruments because of its flexibility, sturdiness, and beautiful coloration.

## Chestnut Oak



Although its serrated leaves resemble those of an American chestnut, this tree is actually a species of oak. It is also referred to as rock oak because it likes to grow in rocky areas. The bark of a chestnut oak has vertical rectangular chunks. Good acorn crops are infrequent, but when available, the sweet nuts are eaten by deer, wild turkeys, squirrels and chipmunks.





# The Need for Trees

Trees are very important to people, animals, insects, fungi, and even other trees. This is because trees provide so many things for people and the forest, including shelter, habitat, food and oxygen. This TRACK Trail Adventure will help you identify six of the most common trees found along this trail.



Use this brochure to identify and learn about trees. For your safety, stay on the trail and be aware of your surroundings. Poison ivy climbs up the trunks of trees, too... so if you see a hairy vine, don't hug that tree!



**TRACK** your hike at [kidsinparks.com](http://kidsinparks.com) and get **FREE** prizes!



Thanks for joining us on the trail today! Visit our website to find more TRACK Trail™ adventures near you!

The next generation of stewards will help preserve the world's plants, animals, natural lands and our heritage. What will you do to make a difference?



*Kids in Parks...*

*Providing a network of fun-filled adventures that get kids and families active outdoors and connected to nature.*



TRACK Trail Partners



Kids in Parks Founding Partners

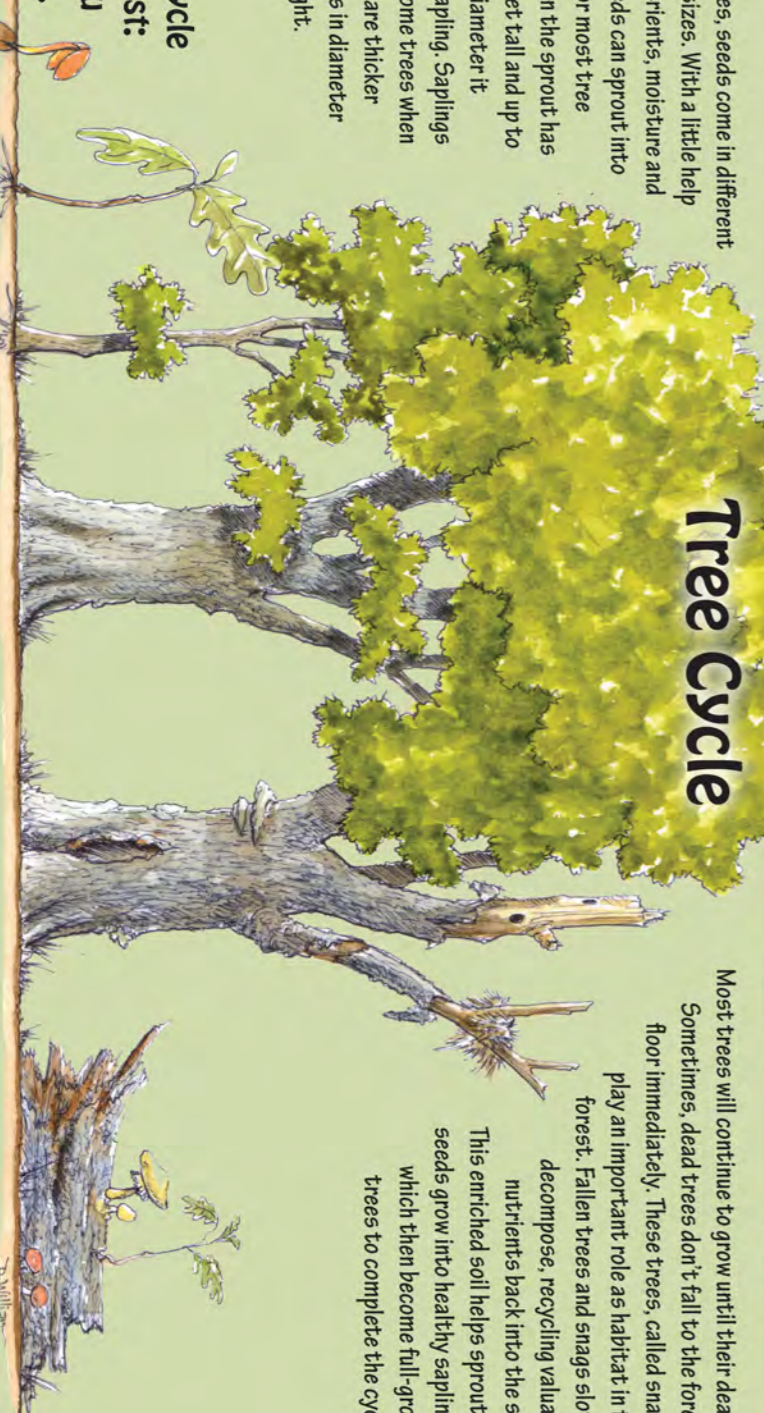


## Tree Cycle

Just like trees, seeds come in different shapes and sizes. With a little help from soil nutrients, moisture and sunlight, seeds can sprout into seedlings. For most tree species, when the sprout has reached 4 feet tall and up to 4 inches in diameter it becomes a sapling. Saplings officially become trees when their trunks are thicker than 4 inches in diameter at chest height.

**Tree Cycle Checklist:**  
Can you find a...

Seed? \_\_\_\_\_  
Seedling? \_\_\_\_\_  
Sapling? \_\_\_\_\_  
Tree? \_\_\_\_\_  
Snag? \_\_\_\_\_  
Fallen Log? \_\_\_\_\_



Most trees will continue to grow until their death. Sometimes, dead trees don't fall to the forest floor immediately. These trees, called snags, play an important role as habitat in the forest. Fallen trees and snags slowly decompose, recycling valuable nutrients back into the soil. This enriched soil helps sprouting seeds grow into healthy saplings, which then become full-grown trees to complete the cycle.