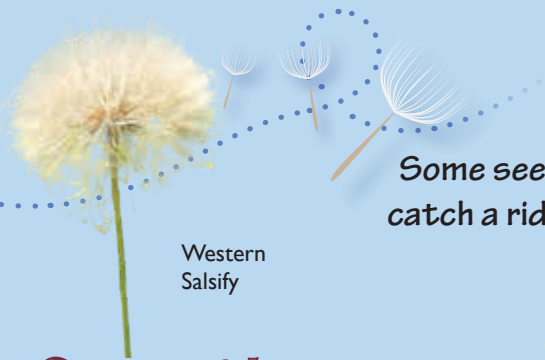


# How Seeds Spread

Plants can't move because they are rooted to the ground, but their seeds can travel for miles. Let's explore some of the ways seeds can spread.

Can you find seeds like these?



Western Salsify

## Wind

Some seeds are able to catch a ride on the wind.

## Gravity

Some plants drop their seeds around them.

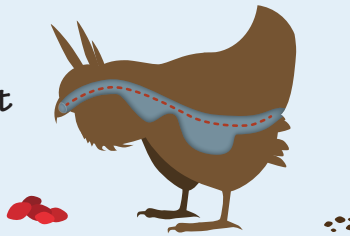


Stiff Sunflower

## Animals

### Edible Explorers

Some plants embed their seeds in nutritious fruit that animals eat. The hard seeds travel with the animal and pass through undigested.



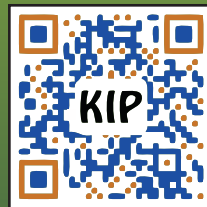
### Hitch-hikers

Some seeds have burs that latch onto the fur of passing animals.

Burdock



**TRACK** your hike at  
[kidsinparks.com](http://kidsinparks.com)  
and get **FREE** prizes!



Follow us on  
**Facebook!**

Kids in Parks Founding Partners



# Prairie Power



These flowers smell great!  
That must be why pollinators  
are so attracted to prairies!

Use this brochure to explore  
the world of flowers and discover  
how prairies have the **power** to  
attract pollinators.



# Prairies Attract Pollinators

Pretend you're a pollinator buzzing around the prairie searching for nectar. Discover the ways flowers use color, shape, and smell to attract different pollinators.

## Nature's Color Palette

Different colors attract different pollinators. How many colors of flowers can you find?

☐ yellow



Black-Eyed Susan

☐ purple



Purple Prairie Clover

☐ pink or red



Common Milkweed

☐ white



Common Yarrow

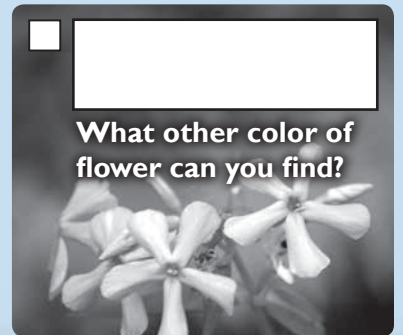
☐ blue



Chicory

☐

What other color of flower can you find?



What flower color are you attracted to? \_\_\_\_\_




Without pollinators flowering plants can't reproduce. Can you imagine a world without flowers?

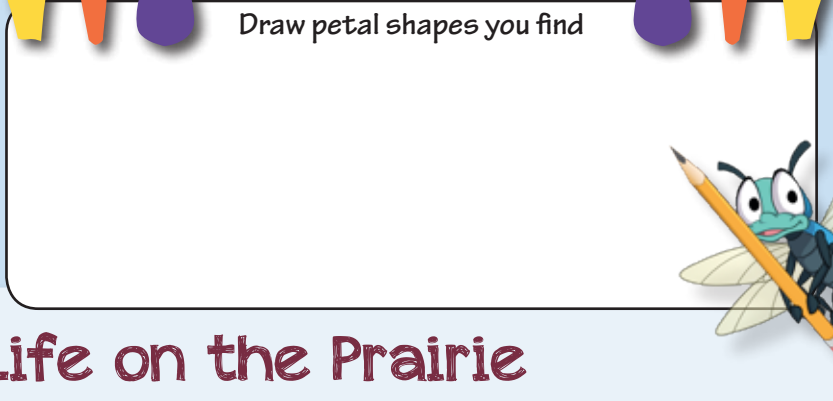
# Science of Shape

The petals of a flower both attract pollinators and give them a place to land while they gather nectar. The shapes and sizes of flowers vary to attract and support different pollinators.

Explore the prairie and find as many different petal shapes as you can.

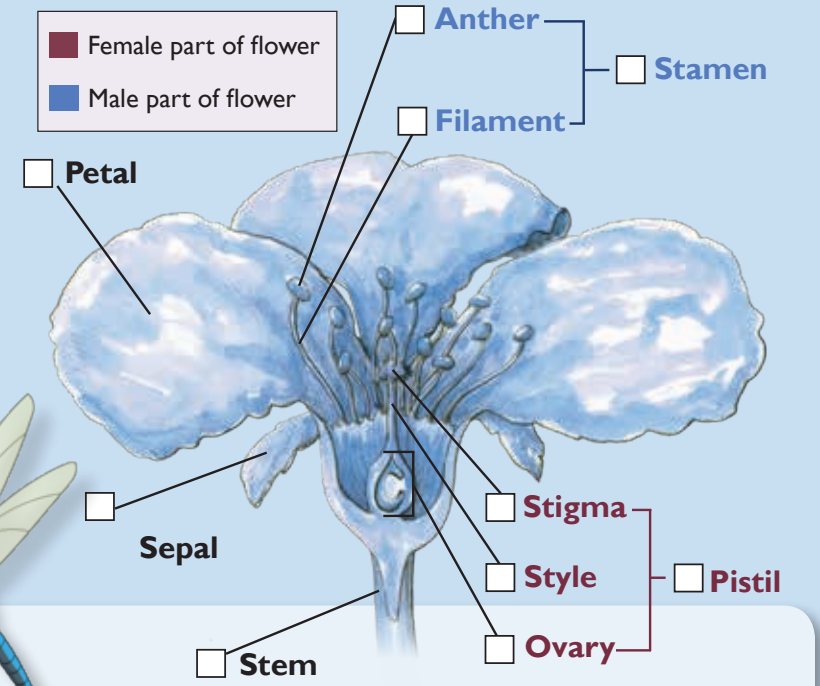


Draw petal shapes you find



# Parts of a Flower

Flowers come in many different shapes and sizes, but they all have the same basic parts. Look closely at a flower and see how many of its parts you can find.



# Life on the Prairie

**Where are the Trees?**  
Prairie plants have deep roots that help them survive the fires that clear out young trees.



**What's the buzz?**  
Pollinators help plants produce seeds by moving pollen from flower to flower as they collect nectar.



## Ready, Set... Grow!

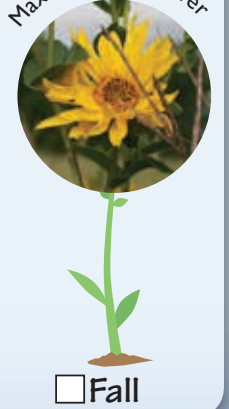


Early flowers bloom lower to the ground while later fall and summer flowers bloom higher to not be shaded out by tall grass.

What season are you exploring?

☐ Spring

☐ Summer

☐ Fall



What flower color are you attracted to? \_\_\_\_\_