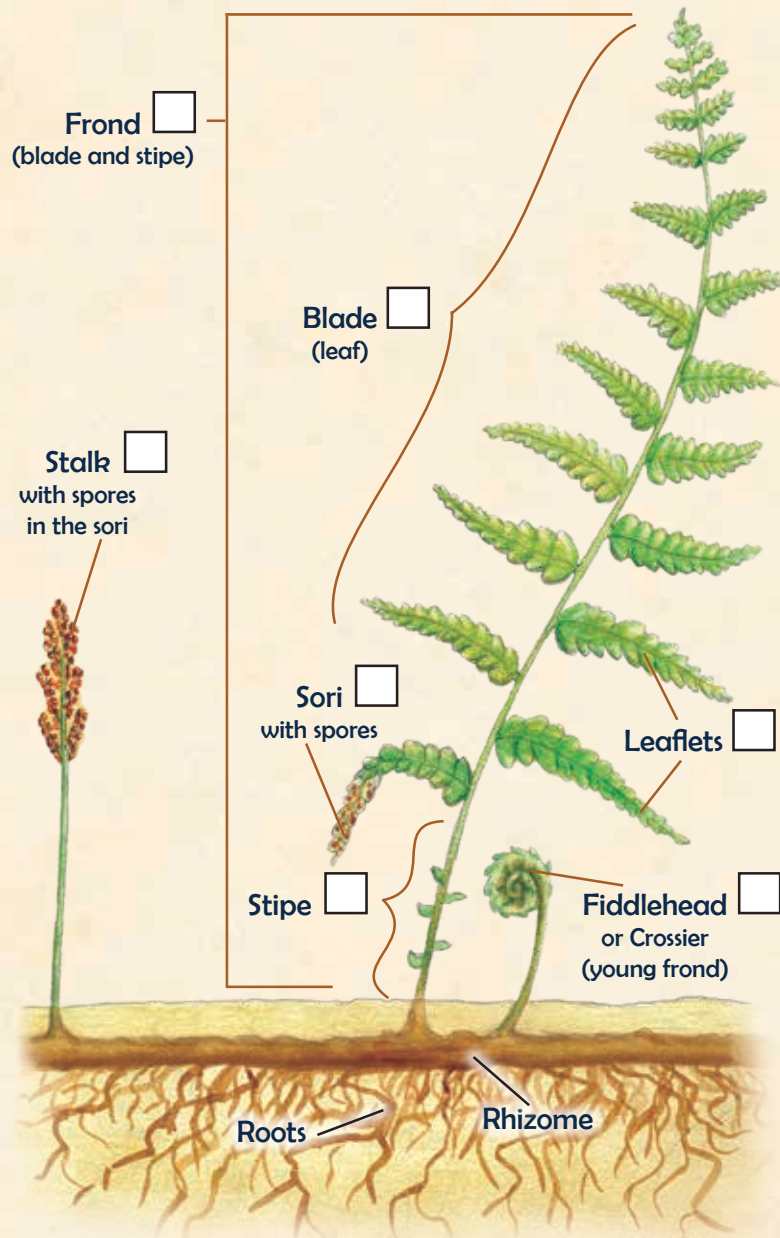


# Fern PARTS

The image below shows all the major parts that might be found on a fern. Find a fern near the trail.

How many different parts can you identify?

*Note: not all ferns have all of these parts.*



TRACK your hike at

[kidsinparks.com](https://kidsinparks.com)

and get **FREE** prizes!



Visit our website  
to find more TRACK Trail™  
adventures near you!

Thanks for joining  
us today!



Follow us!



@KidsInParks



@KidsInParksBRPF



Kids in Parks is a program of the



# Finding FERNs

Have you ever walked on a path with ferns and wondered if there was a dinosaur nearby?

Ferns are some of the oldest types of plants on Earth and were one of the dominant plants when dinosaurs lived. Today, ferns grow all over the world in many shapes and sizes.



On your hike today, use this guide to identify some of the various ferns that call the forest home. Start with the 'Fern Parts' section to learn more about how to identify a fern.

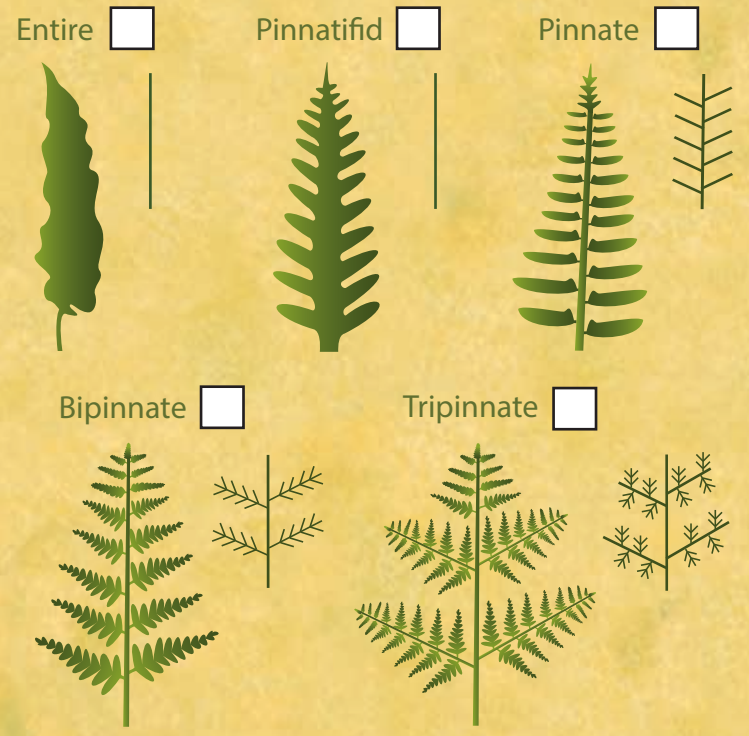


# Fern TRACKER

At a glance, many ferns look alike. But if you take a second look, these beautiful plants provide clues to help you identify them. Use the activity on the right to see how many you can find!

## Fern Forms

The **blade**, or leaf of a fern can be found in five major forms. Look at how the blade splits into leaflets. How many blade forms can you find?



## Spores Not Seeds

Most plants use *seeds* to reproduce, but ferns use single cells called **spores**. Depending on the fern species, spore-producing objects called **sori** are found on either fronds or stalks. Some spores that are released and find moist ground will germinate. Can you find sori on a fern? \_\_\_\_\_



Leaflet with sori

### Lady Fern ☐

(*Athyrium filix-femina*)

Are the fronds light green, *bipinnate* (appearing almost tripinnate), and tapered at both ends? Do the leaflets have finely toothed feathery edges? Is the stem green to reddish and smooth, without scales or hairs?



### Licorice Fern ☐

(*Polypodium glycyrrhiza*)

Are the fronds evergreen, leathery, and *pinnatifid*? Do they grow directly from moss-covered logs, rocks, or trees? Is there a red creeping rhizome visible at the base?



### Western Maidenhair Fern ☐

(*Adiantum aleuticum*)

Are the fronds fan-shaped, *pinnate*, and divided like delicate fingers? Do black, wiry stems support the fronds? Do the fronds radiate in a circular, umbrella-like pattern?



### Western Sword Fern ☐

(*Polystichum munitum*)

Are the fronds long and arching, with tough, *pinnate* leaflets? Do the leaflets have tiny, pointed tips that resemble swords? Are the sori neatly lined along the undersides?

